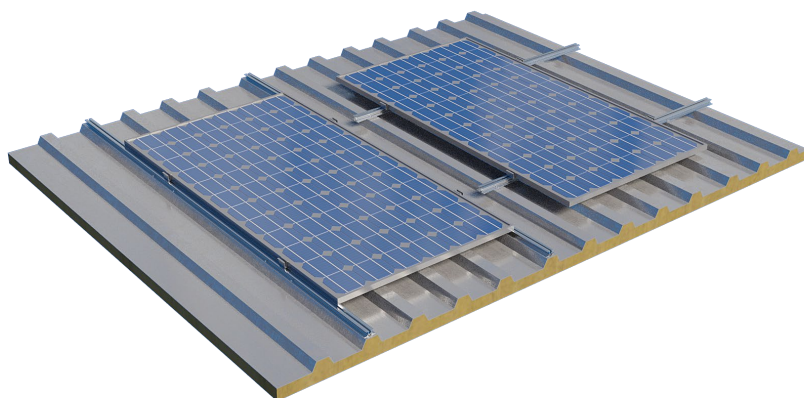
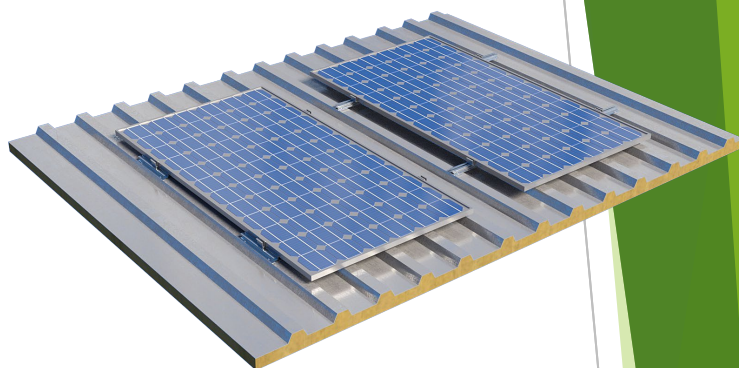
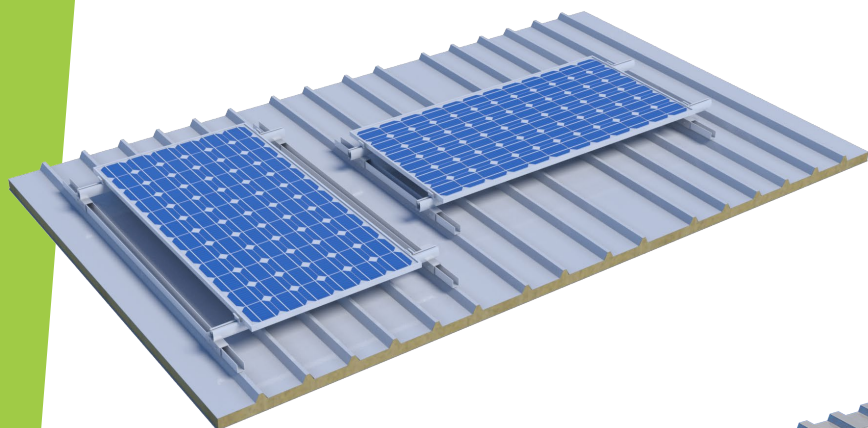


# Alpha Solar RF Industrial Catalog



## Data Sheet/Installation Manual

SYSTEMS FOR GROOVED, FLAT SHEET METAL OR  
POLYURETHANE PANELS  
INDUSTRIAL ROOFS



[www.emmanouil.sa.com](http://www.emmanouil.sa.com)

1<sup>st</sup> Industrial Area  
OT 1819, Volos TK38500  
Greece

T/F: +30 24210 85233  
@: [info@emmanouil.sa.com](mailto:info@emmanouil.sa.com)



## Installation Safety

The maintenance of a safe and healthful working environment is of the utmost importance. Safety requirements must be considered fundamental to the construction of any project. It is essential that the workforce be trained to follow procedures consistent with applicable safety standards. Each person must be constantly alert to his or her personal obligation to observe safe operating procedures. The continued cooperation of all personnel is required to support and sustain an effective safety environment.



Make sure that all machine operators are trained in the use and safety of all machinery and are licensed to use the equipment.

### Use of the following is Mandatory for Safety:



**Hard Hat**



**Safety Footwear**



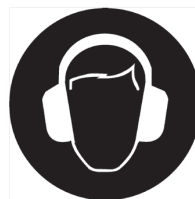
**Protective Clothing**



**Eye Protection**



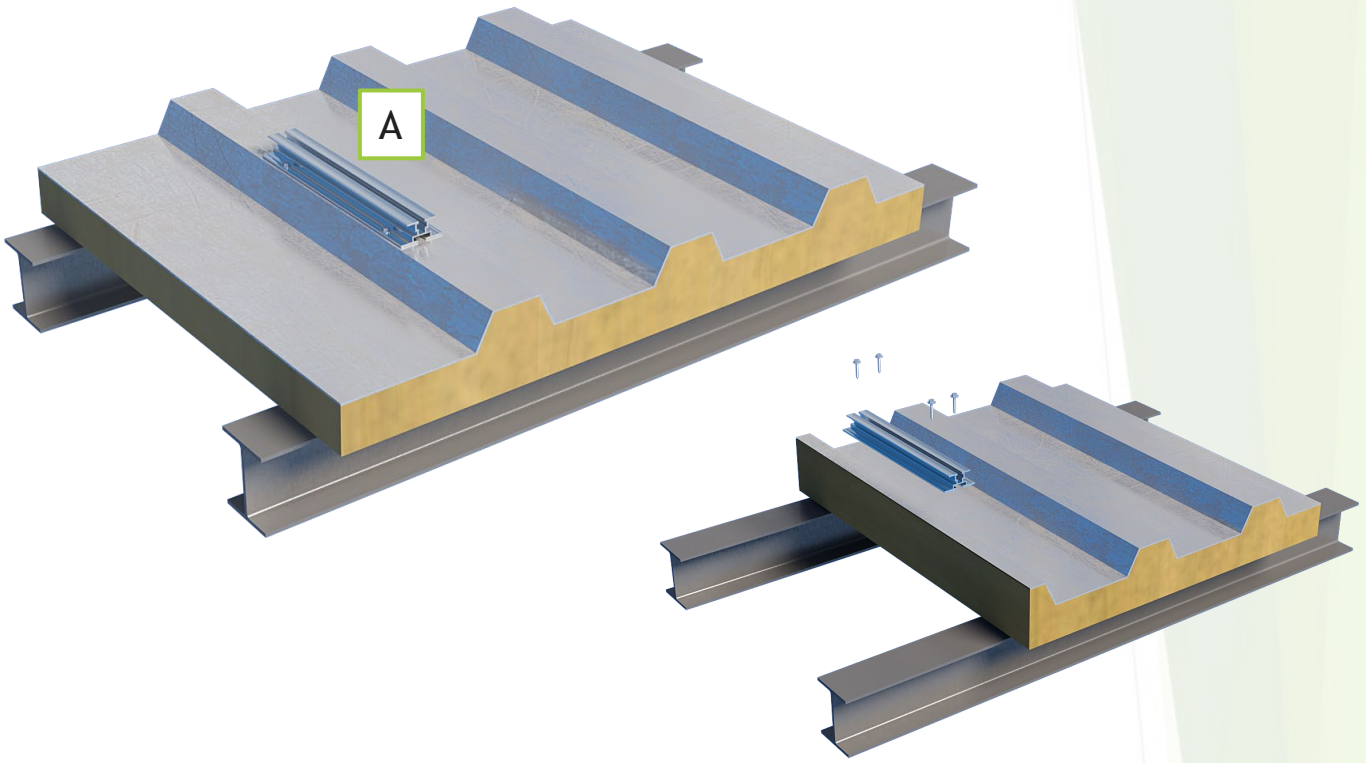
**High Visibility Vest**

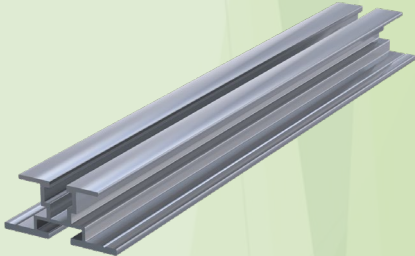


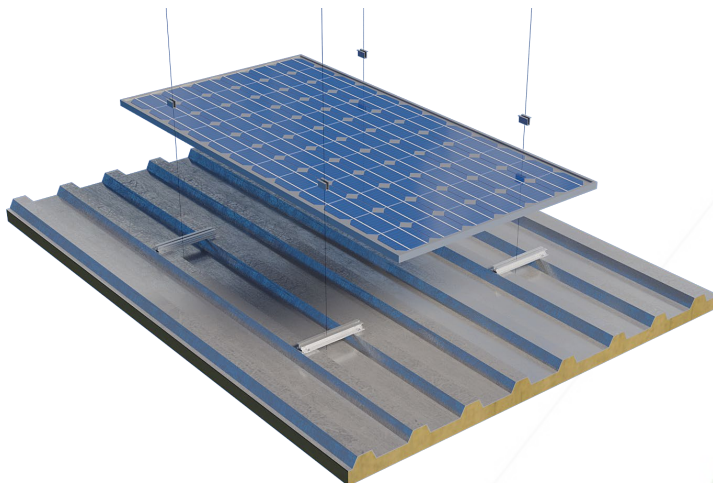
**Hearing Protection**

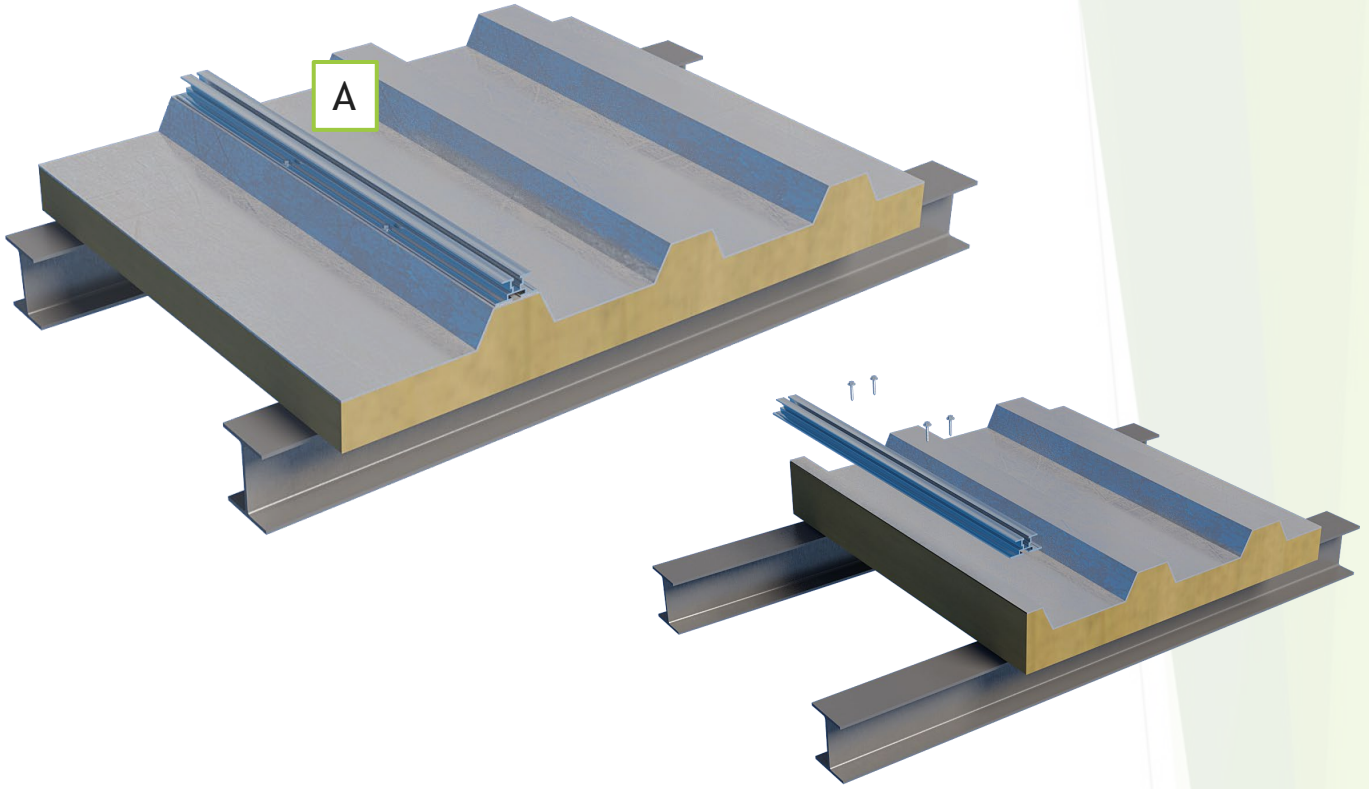


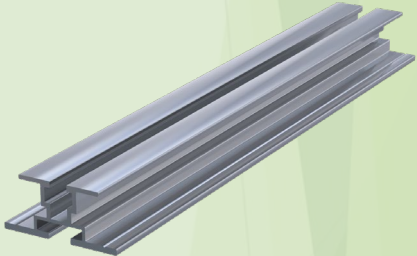
**Hand Protection**

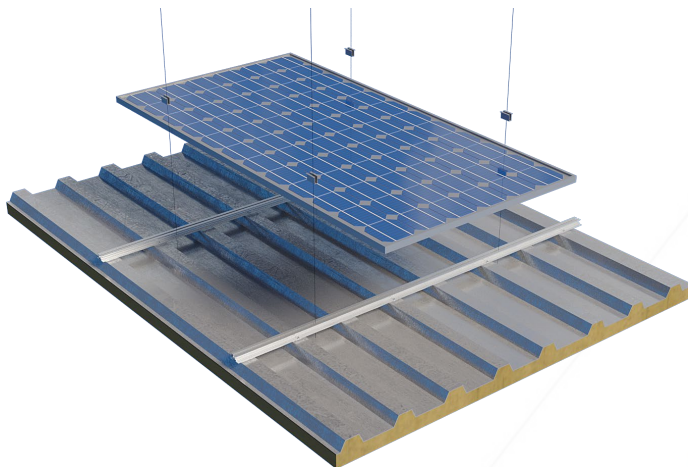


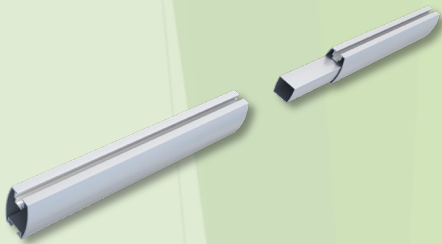
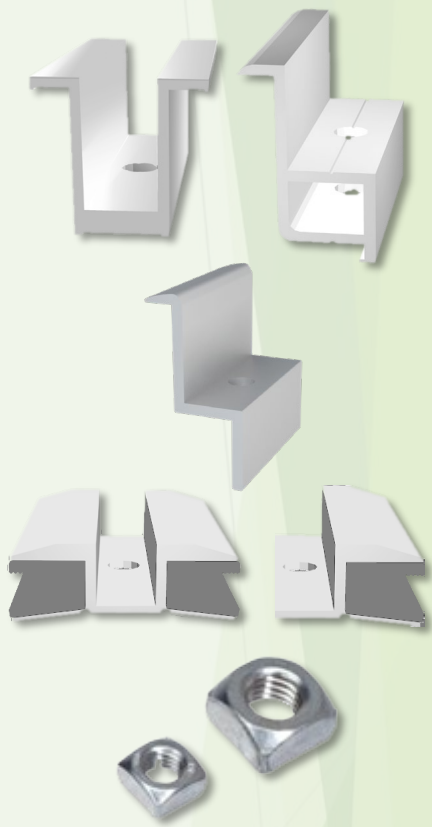

Part	Technical Description	Image
A	<p><b>Purlin</b>  <b>ALU 76292 57x27x2mm</b></p> <ul style="list-style-type: none"> <li>▪ Aluminium 6063T66</li> <li>▪ Length: Varies by application</li> </ul>	





Part	Technical Description	Image
A	<p><b>Purlin</b>  <b>ALU 76292 57x27x2mm</b></p> <ul style="list-style-type: none"> <li>▪ Aluminium 6063T66</li> <li>▪ Length: Varies by application</li> </ul>	



Part	Technical Description	Image
	<p><b>Module Support Beam Connectors</b>  <b>ALU 6063T66</b></p> <ul style="list-style-type: none"> <li>▪ 36x33x1.5mm</li> <li>▪ Length: ~250mm</li> </ul>	
	<p><b>Module Clamps</b>  <b>Aluminum 6063T66</b></p> <p><b>Polycrystalline Clamps</b>  <b>Middle Clamp - 50mm</b>  <b>End Clamp - 50mm</b></p> <p><b>Thin Film Clamps</b>  <b>Various Types</b></p> <p><b>Bolt(s) : DIN 912 M8 (Various Lengths depending on module thickness) - DIN 557 M8 A2</b></p>	
	<p><b>DIN7504 M6.3x25</b>  <b>SELF DRILLING</b>  <b>WITH HEXAGON</b>  <b>HEAD AND</b>  <b>WASHER</b></p>	

# FFH 2P 2C 3000 - Parts List

Part	Image	Torque
<p>Art. 9505 A2/CV 4,5X25 EPDM washer 14 mm</p>		<p>N/A</p>
<p>9097 M8x20 Hammer Head Bolt</p>		<p>~20 Nm</p>
<p>DIN934 M8 HEX NUT</p>		<p>N/A</p>
<p>DIN125 M8.5 WASHER</p>		<p>N/A</p>
<p>DIN 912 A2-70 M 8X30/30</p>		<p>~25 Nm</p>
<p>DIN 557 A2-70 M 8</p>		<p>N/A</p>

## Planning and Design

The RF-C Industrial mounting system is designed and engineered individually for each project site and location. A geotechnical and static study will need to be performed for each site in order to be able to plan and design the mounting system.

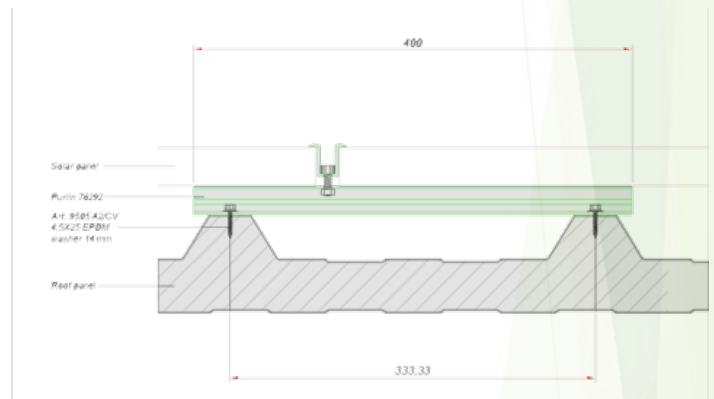
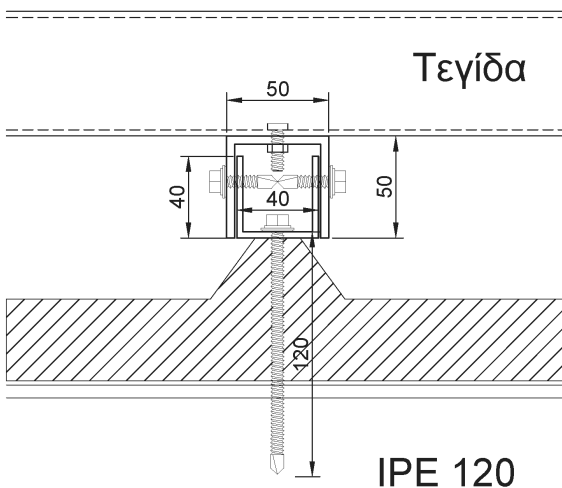
For the mounting system installation there are certain tolerances that you will need to adhere to in order to make sure that the installation is completed correctly, and the project is built to standards.

Each site will need a general layout plan with installation point positions and general layout plan of the mounting system. It is important to follow the design so that the system is installed correctly.

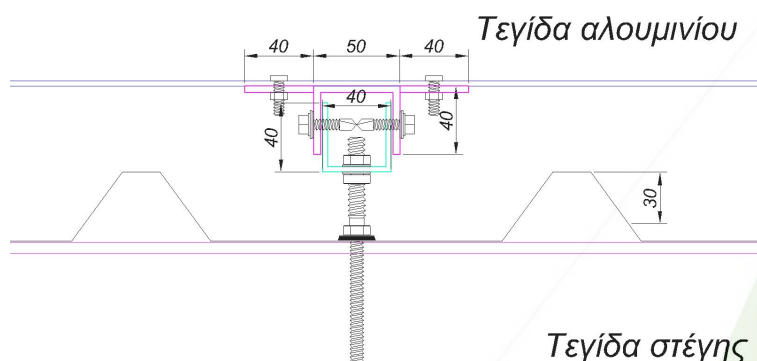
Following you will find examples of a general table layout and mounting system section layout.

## RF-C Industrial - Mounting System Details

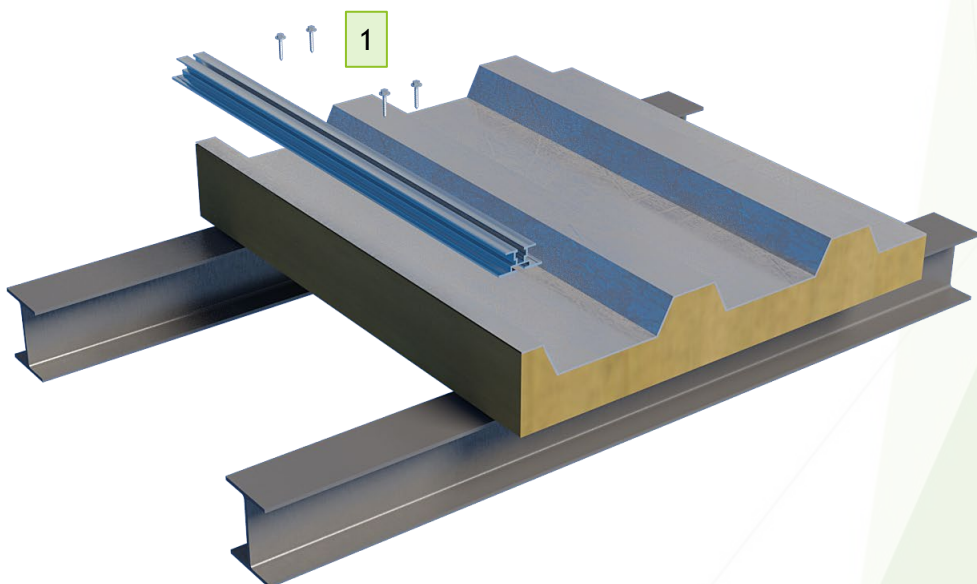
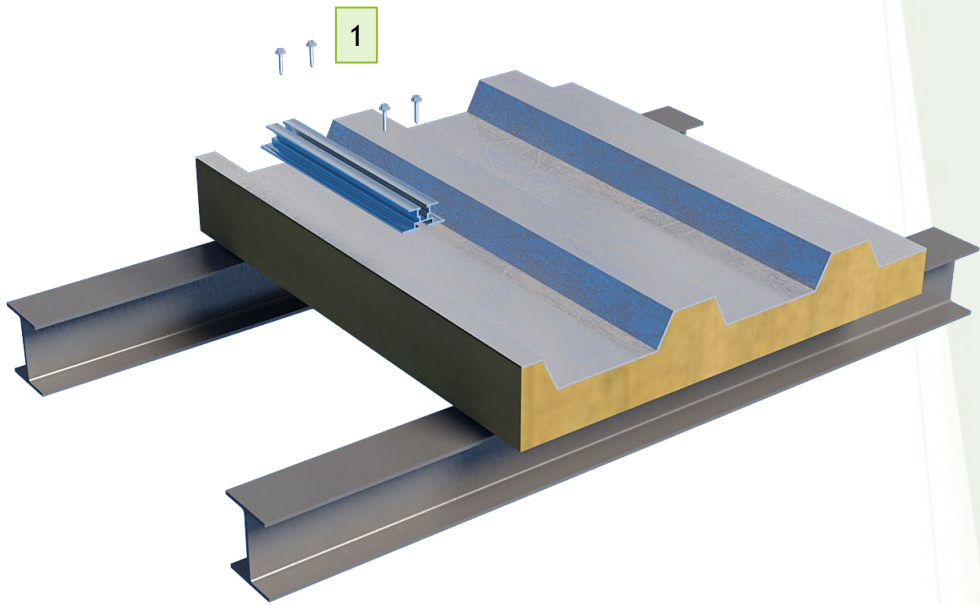
### ΣΤΗΡΙΞΗ ΣΕ ΠΑΝΕΛ



### ΣΤΗΡΙΞΗ ΣΕ ΤΡΑΠΕΖΟΕΙΔΟΥΣ ΛΑΜΑΡΙΝΑΣ



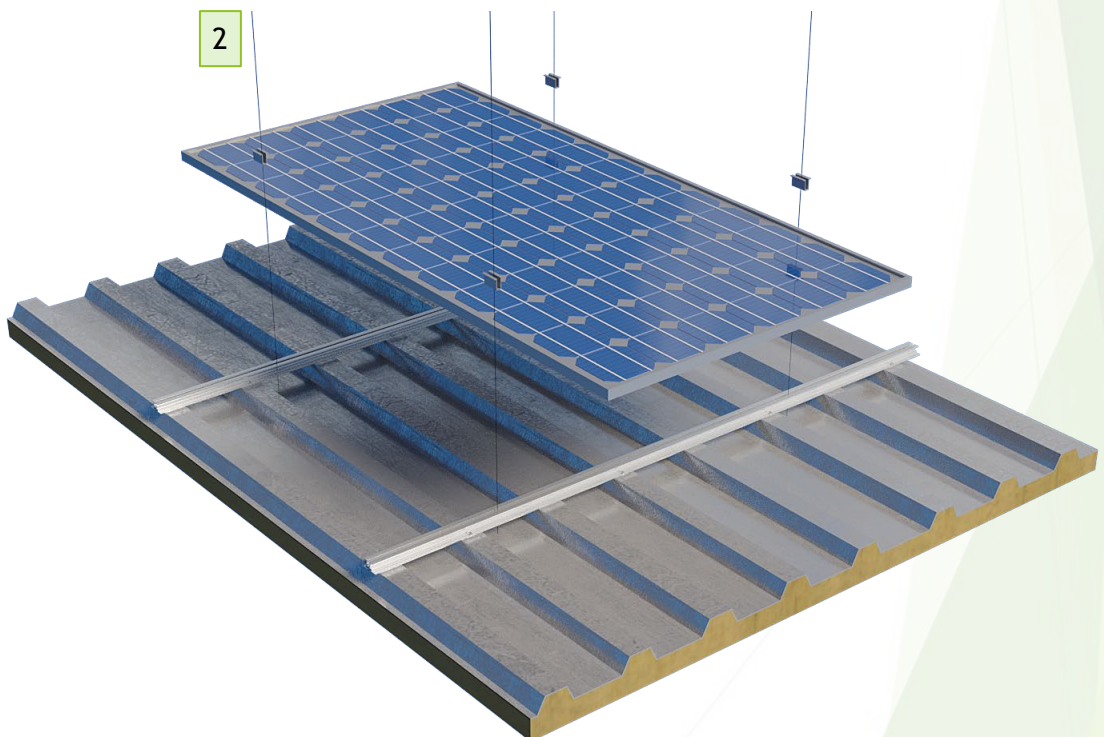
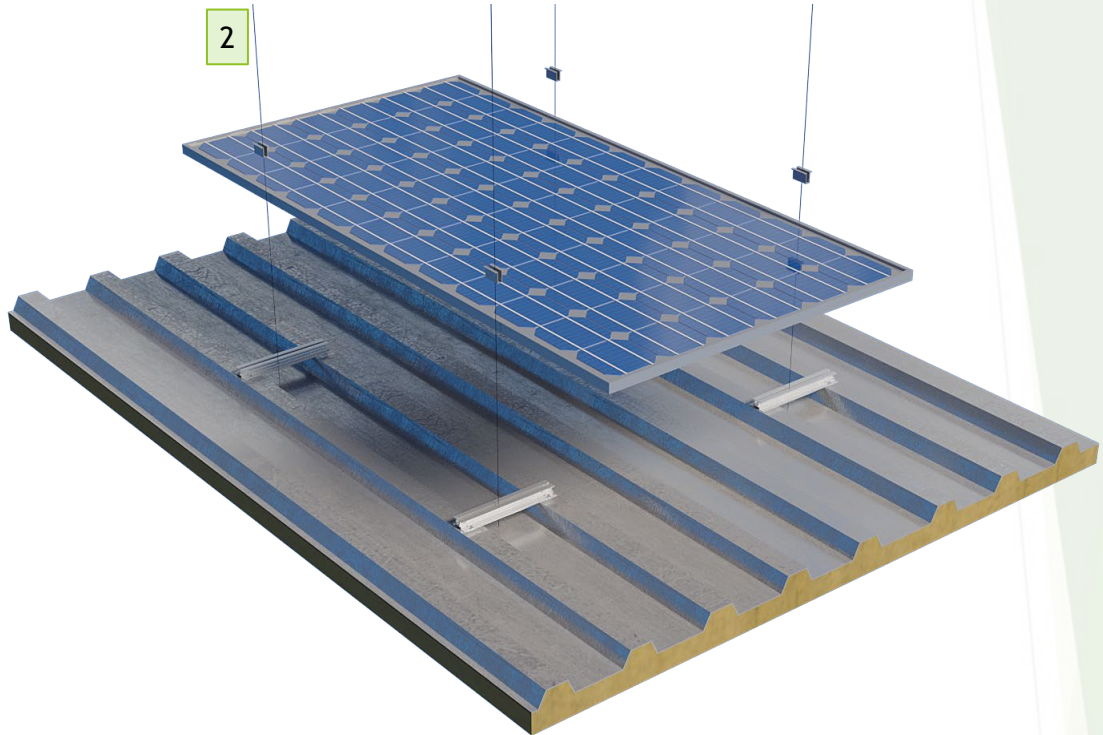
1. Art. 9505 A2/CV 4,5X25 EPDM washer 14 mm




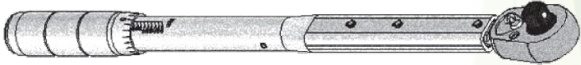



## RF Industrial - Mounting System Assembly

2. Module Clamps + DIN912 M8 HEX Screw + DIN557 Square Nut



## Tools Needed for Assembly

Part	Technical Description	Image
<b>1</b>	<b>Allen Wrench 6mm</b>	
<b>2</b>	<b>Torque Wrench</b>	
<b>3</b>	<b>Wrench 13mm and 17mm</b>	

# Alpha Solar RF-Compact Industrial



[www.emmanouilsa.com](http://www.emmanouilsa.com)

1<sup>st</sup> Industrial Area  
OT 1819, Volos TK38500  
Greece

T/F: +30 24210 85233  
@: [info@emmanouilsa.com](mailto:info@emmanouilsa.com)