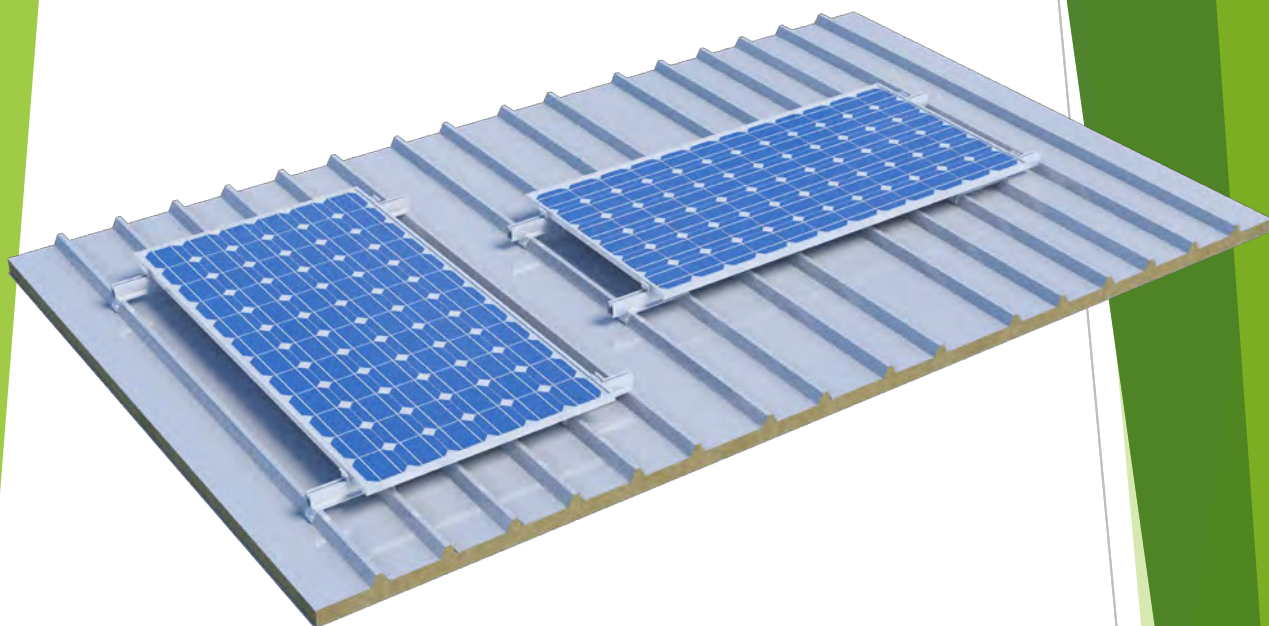


Alpha Solar RF-Compact Industrial



Data Sheet/Installation Manual



www.emmanouil.sa.com

1st Industrial Area
OT 1819, Volos TK38500
Greece

T/F: +30 24210 85233
@: info@emmanouil.sa.com



Installation Safety

The maintenance of a safe and healthful working environment is of the utmost importance. Safety requirements must be considered fundamental to the construction of any project. It is essential that the workforce be trained to follow procedures consistent with applicable safety standards. Each person must be constantly alert to his or her personal obligation to observe safe operating procedures. The continued cooperation of all personnel is required to support and sustain an effective safety environment.



Make sure that all machine operators are trained in the use and safety of all machinery and are licensed to use the equipment.

Use of the following is Mandatory for Safety:



Hard Hat



Safety Footwear



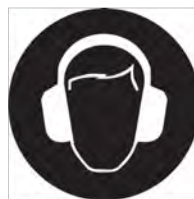
Protective Clothing



Eye Protection



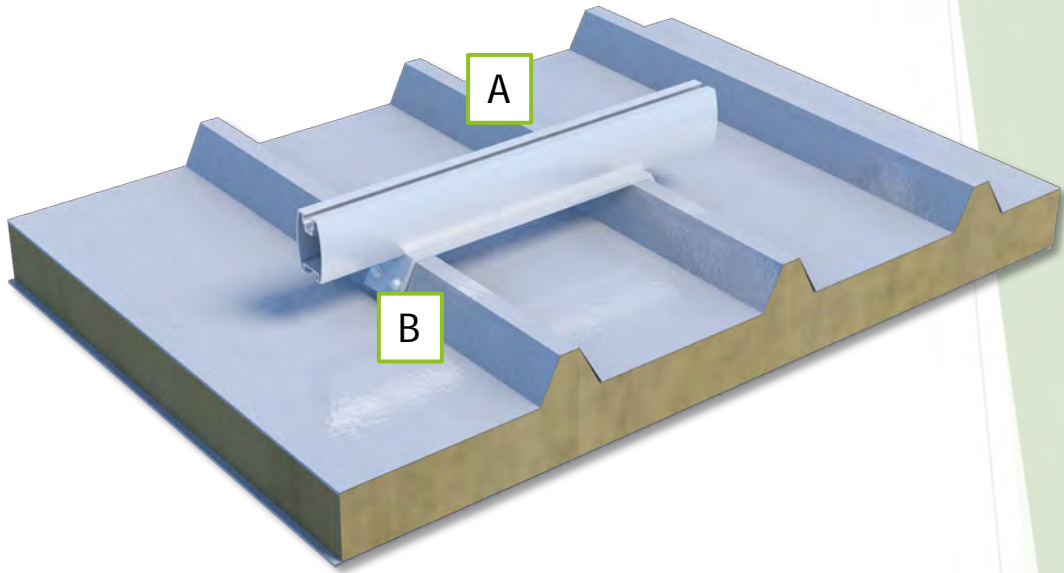
High Visibility Vest



Hearing Protection

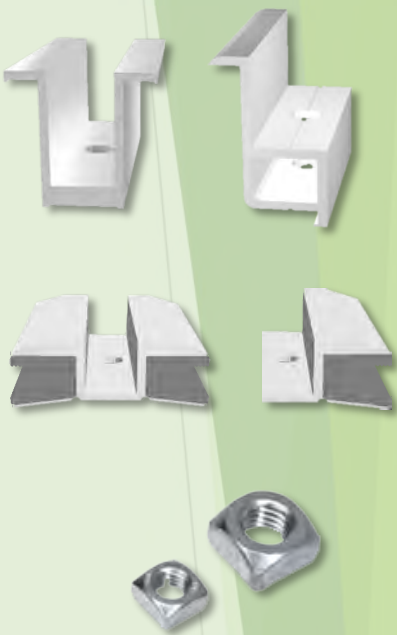




Hand Protection



Part	Technical Description	Image
A	<p>ALU 29156 70x50x2</p> <ul style="list-style-type: none"> ▪ Aluminium 6063T66 ▪ Length: 300mm 	
B	<p>PB 250 250x50x4</p> <ul style="list-style-type: none"> ▪ PL4x50x250mm ▪ Hot Dip Galvanized 	

RF-C Industrial - Parts List

Part	Technical Description	Image
<p>Module Clamps</p>	<p>Aluminum 6063T66</p> <p>Polycrystalline Clamps Middle Clamp - 50mm End Clamp - 50mm</p> <p>Thin Film Clamps Various Types</p> <p>Bolt(s) : DIN 912 M8 (Various Lengths depending on module thickness) - DIN 557 M8 A2</p>	
<p>Purlin Adapter Screws</p>	<p>ART.9057 M6.5x19 Cladding screws with point, sealing washer 16 mm</p>	
<p>Purlin Bolts and Nuts</p>	<p>Art. 9097 A2 M 8X20 Hammer head type 28/15 w/ DIN 934 A2-70 M 8 HEX</p>	

Planning and Design

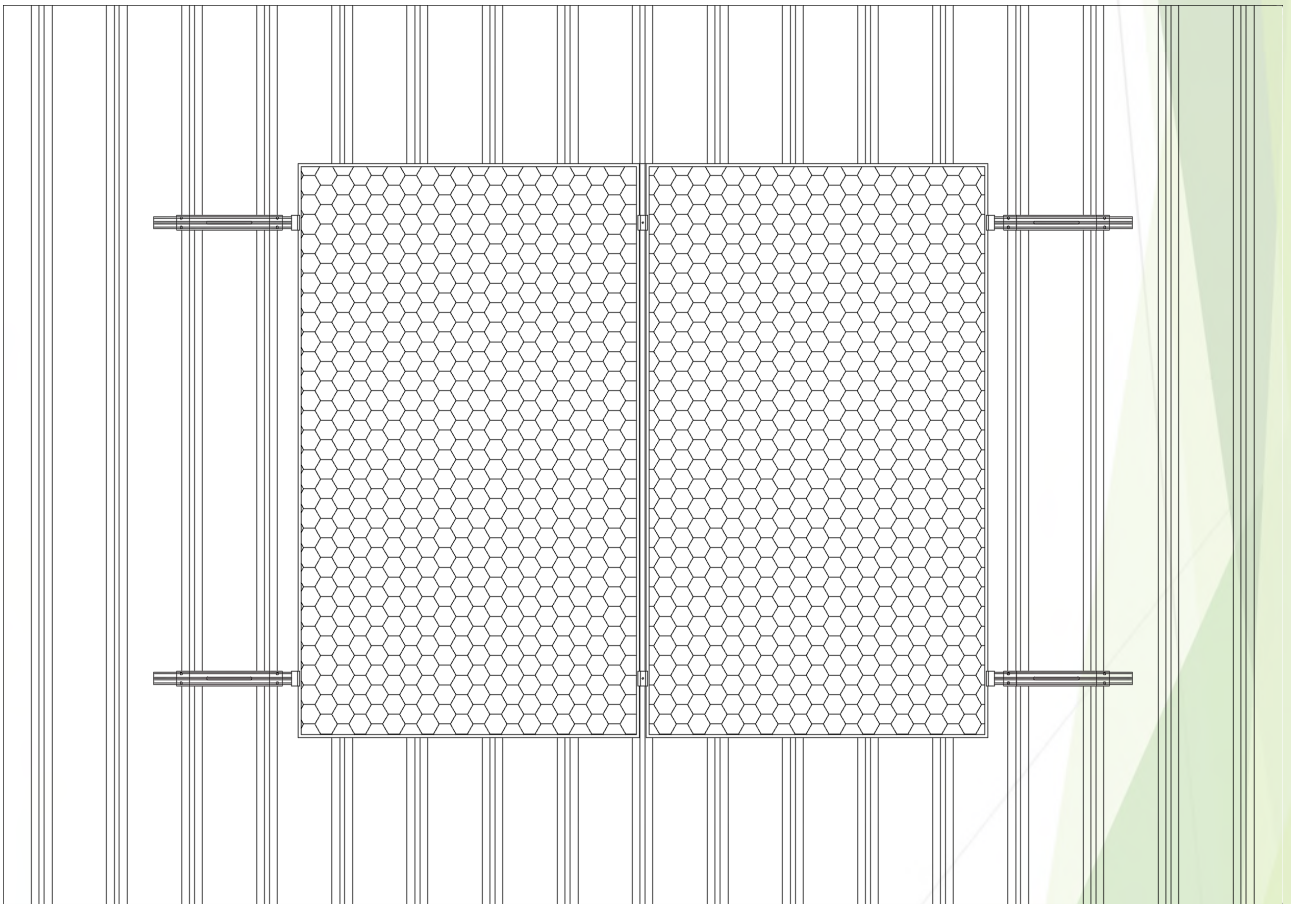
The RF-C Industrial mounting system is designed and engineered individually for each project site and location. A geotechnical and static study will need to be performed for each site in order to able to plan and design the mounting system.

For the mounting system installation there are certain tolerances that you will need to adhere to in order to make sure that the installation is completed correctly, and the project is built to standards.

Each site will need a general layout plan with installation point positions and general layout plan of the mounting system. It is important to follow the design so that the system is installed correctly.

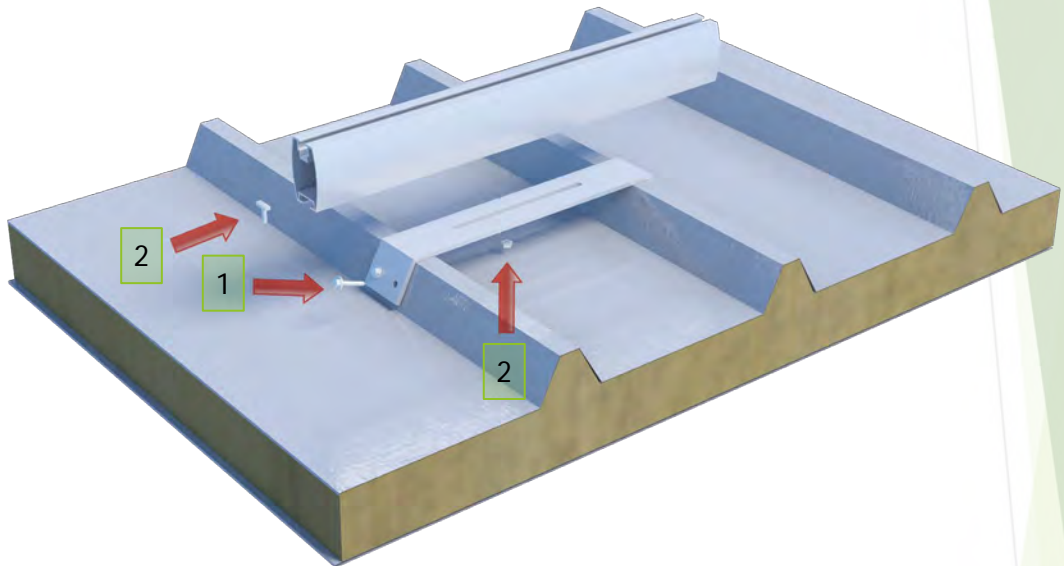
Following you will find examples of a general table layout and mounting system section layout.

RF-C Industrial - Mounting System Layout Example



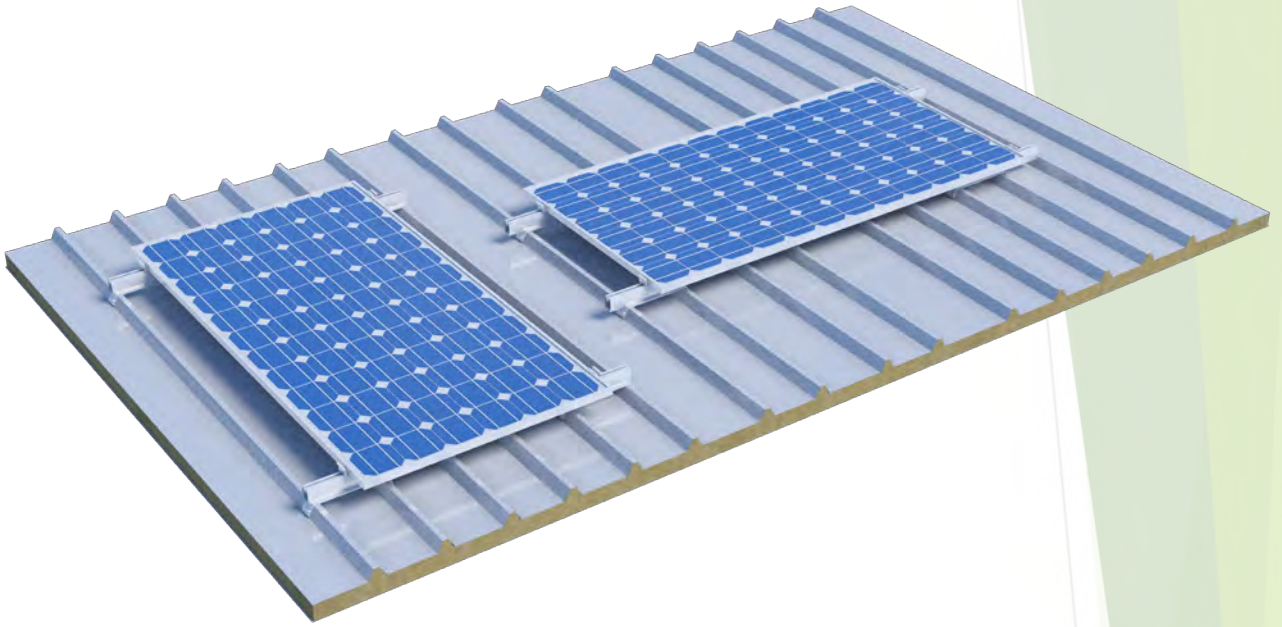
RF-C Industrial - Mounting System Assembly

1. ART.9057 M6.5x19 Cladding screws with point, sealing washer 16 mm
2. Art. 9097 A2 M 8X20 Hammer head type 28/15
DIN 934 A2-70 M 8 HEX



Tools Needed for Assembly

Part	Technical Description	Image
1	Allen Wrench 6mm	
2	Torque Wrench	
3	Wrench 13mm and 17mm	



RF-C Industrial Preventative Maintenance

It is important for the mounting system to be checked every 12 months and to use a torque wrench to check the mounting cap bolts and other screws for proper tightened torque.

Alpha Solar RF-Compact Industrial



www.emmanouilsa.com

1st Industrial Area
OT 1819, Volos TK38500
Greece

T/F: +30 24210 85233
@: info@emmanouilsa.com