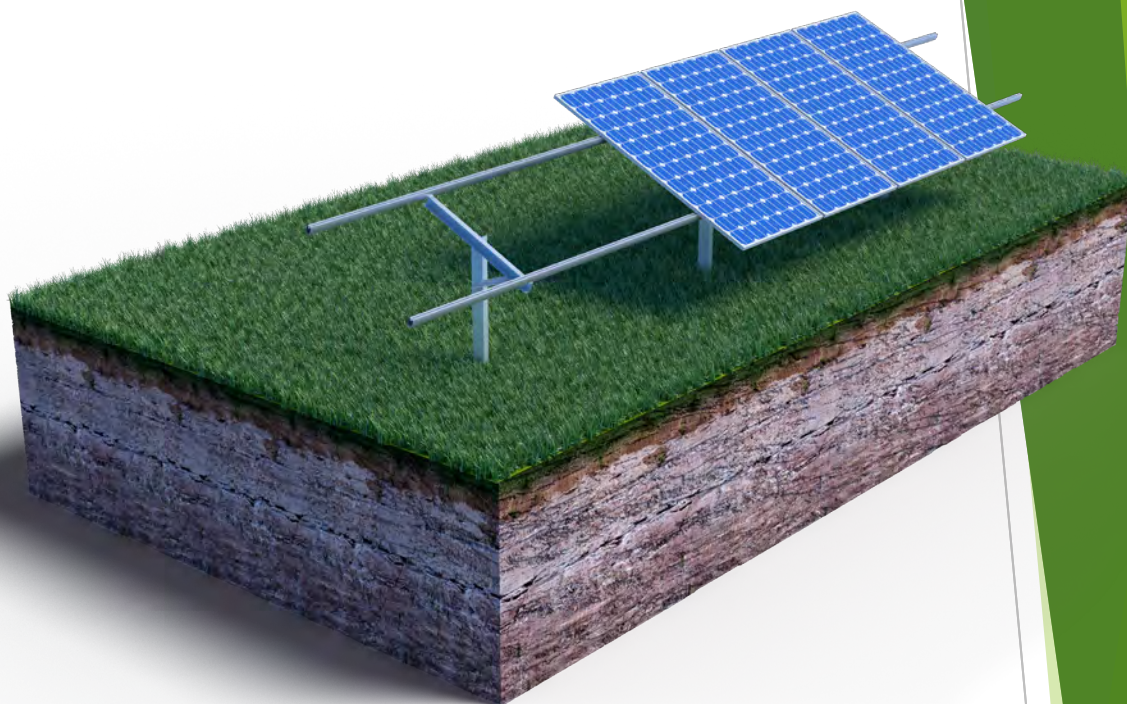


# Alpha Solar FFH 1P 1C 1000



## Data Sheet/Installation Manual



1<sup>st</sup> Industrial Area  
OT 1819, Volos TK38500  
Greece

T/F: +30 24210 85233  
@: [info@emmanouilsa.com](mailto:info@emmanouilsa.com)



## Installation Safety

The maintenance of a safe and healthful working environment is of the utmost importance. Safety requirements must be considered fundamental to the construction of any project. It is essential that the workforce be trained to follow procedures consistent with applicable safety standards. Each person must be constantly alert to his or her personal obligation to observe safe operating procedures. The continued cooperation of all personnel is required to support and sustain an effective safety environment.



Make sure that all machine operators are trained in the use and safety of all machinery and are licensed to use the equipment.

### Use of the following is Mandatory for Safety:



**Hard Hat**



**Safety Footwear**



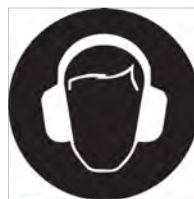
**Protective Clothing**



**Eye Protection**



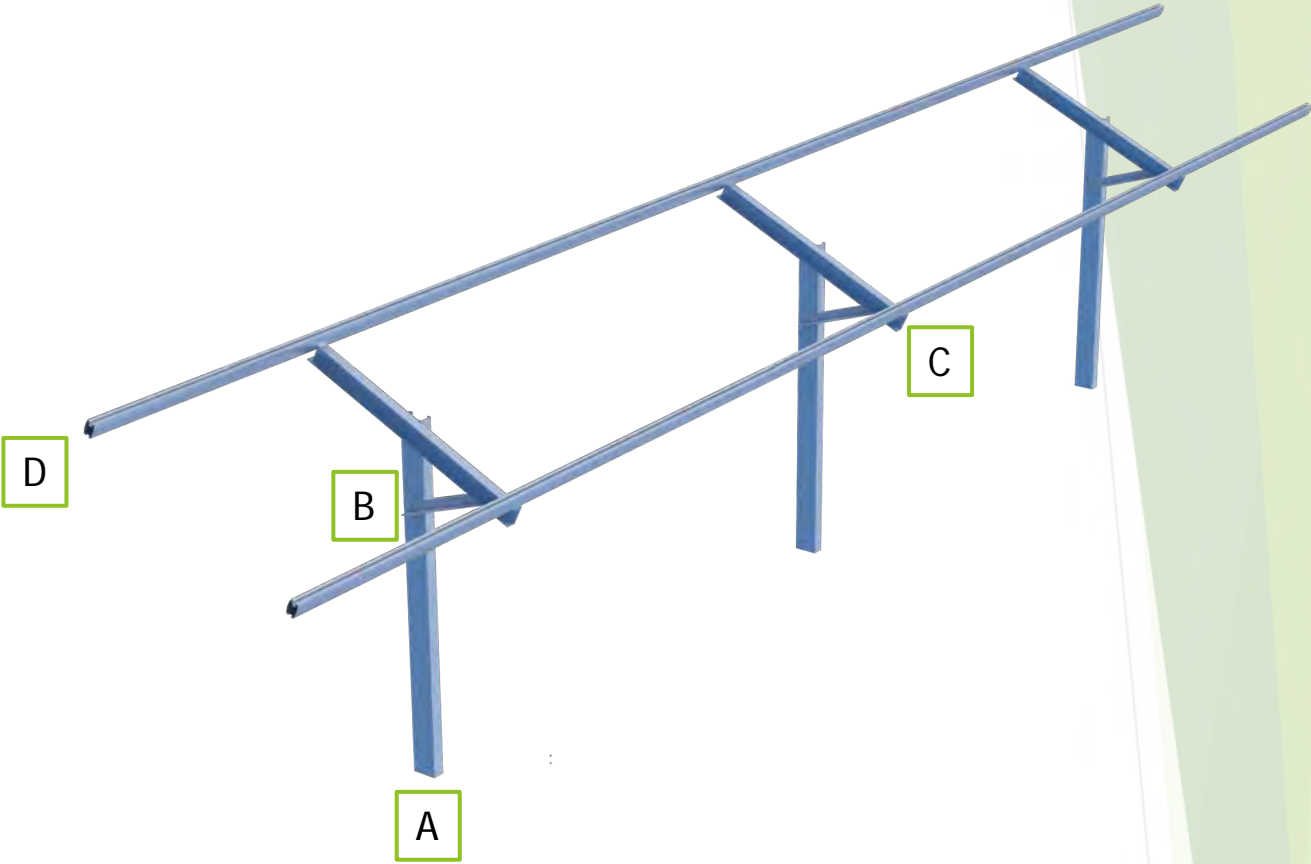
**High Visibility Vest**



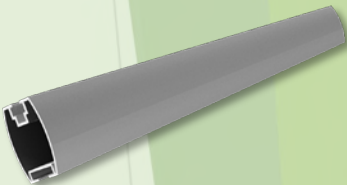

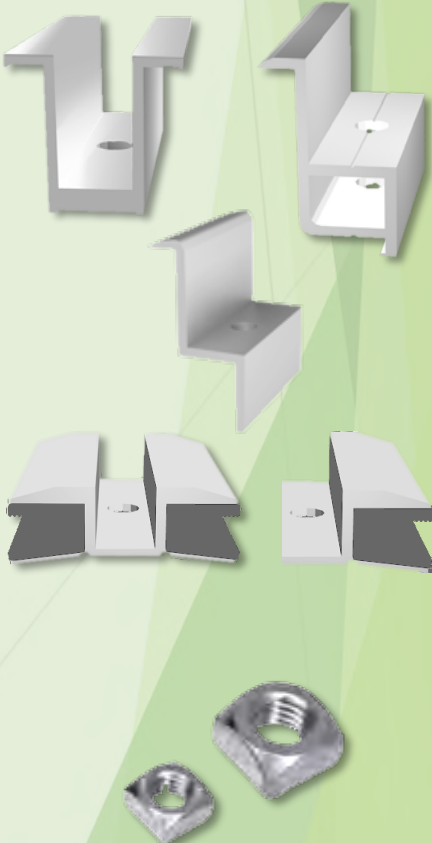
**Hearing Protection**








**Hand Protection**



Part	Technical Description	Image
A	<p>CST 120x50x15x3</p> <ul style="list-style-type: none"><li>▪ Hot Galvanized (min. 55µm)<ul style="list-style-type: none"><li>▪ S275</li></ul></li><li>▪ Length: Varies by application</li></ul>	
B	<p>L 40x3</p> <ul style="list-style-type: none"><li>▪ Hot Galvanized (min. 55µm)<ul style="list-style-type: none"><li>▪ S275</li></ul></li><li>▪ Length: Varies by application</li></ul>	
C	<p>CST 100x40x3</p> <ul style="list-style-type: none"><li>▪ Hot Galvanized (min. 55µm)<ul style="list-style-type: none"><li>▪ S275</li></ul></li><li>▪ Length: Varies by application</li></ul>	

Part	Technical Description	Image
D	<p><b>Mounting Beam</b></p> <ul style="list-style-type: none"><li>▪ ALU 60x40x2mm</li><li>▪ Aluminium 6063T66</li><li>▪ Length: Varies by application</li></ul>	
	<p><b>Module Support Beam Connectors</b></p> <ul style="list-style-type: none"><li>▪ ALU 36x33x1.5mm</li><li>▪ Aluminium 6063T66</li><li>▪ Length: ~250mm</li></ul>	
	<p><b>Module Clamps</b> Aluminum 6063T66</p> <p>Polycrystalline Clamps Middle Clamp - 50mm End Clamp - 50mm</p> <p>Thin Film Clamps Various Types</p> <p>Bolt(s) : DIN 912 M8 (Various Lengths depending on module thickness) - DIN 557 M8 A2</p>	

FFH 1P 1C 1000 - Parts List

Part	Image	Torque
DIN933 M10x30 HEX BOLT		~30 Nm** See Tightening Torque Chart
DIN934 M10 HEX NUT		N/A
DIN9021 M10.5 WASHER		N/A
9097 M10x25 Hammer Head Bolt		~30 Nm** See Tightening Torque Chart
DIN934 M10 HEX NUT		N/A
DIN125 M10.5 WASHER		N/A

### Planning and Design

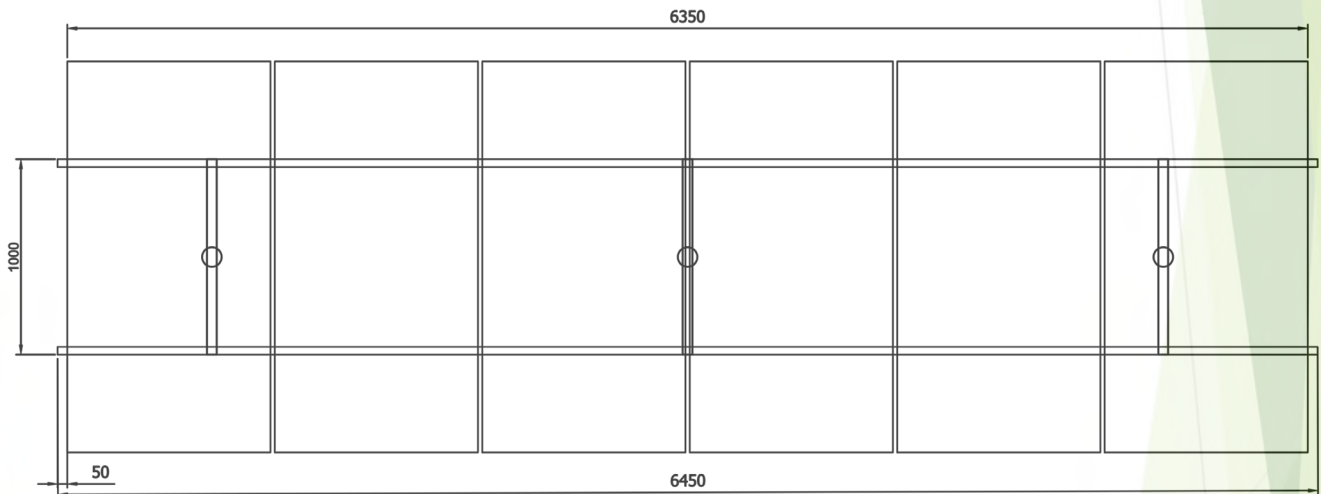
The Free Field (FF) 1P 1C mounting system is designed and engineered individually for each project site and location. A geotechnical and static study will need to be performed for each site in order to be able to plan and design the mounting system.

For the mounting system installation there are certain tolerances that you will need to adhere to in order to make sure that the installation is completed correctly, and the project is built to standards.

Each site will need a general layout plan with ramming point positions and general layout plan of the mounting system. It is important to follow the design so that the system is installed correctly.

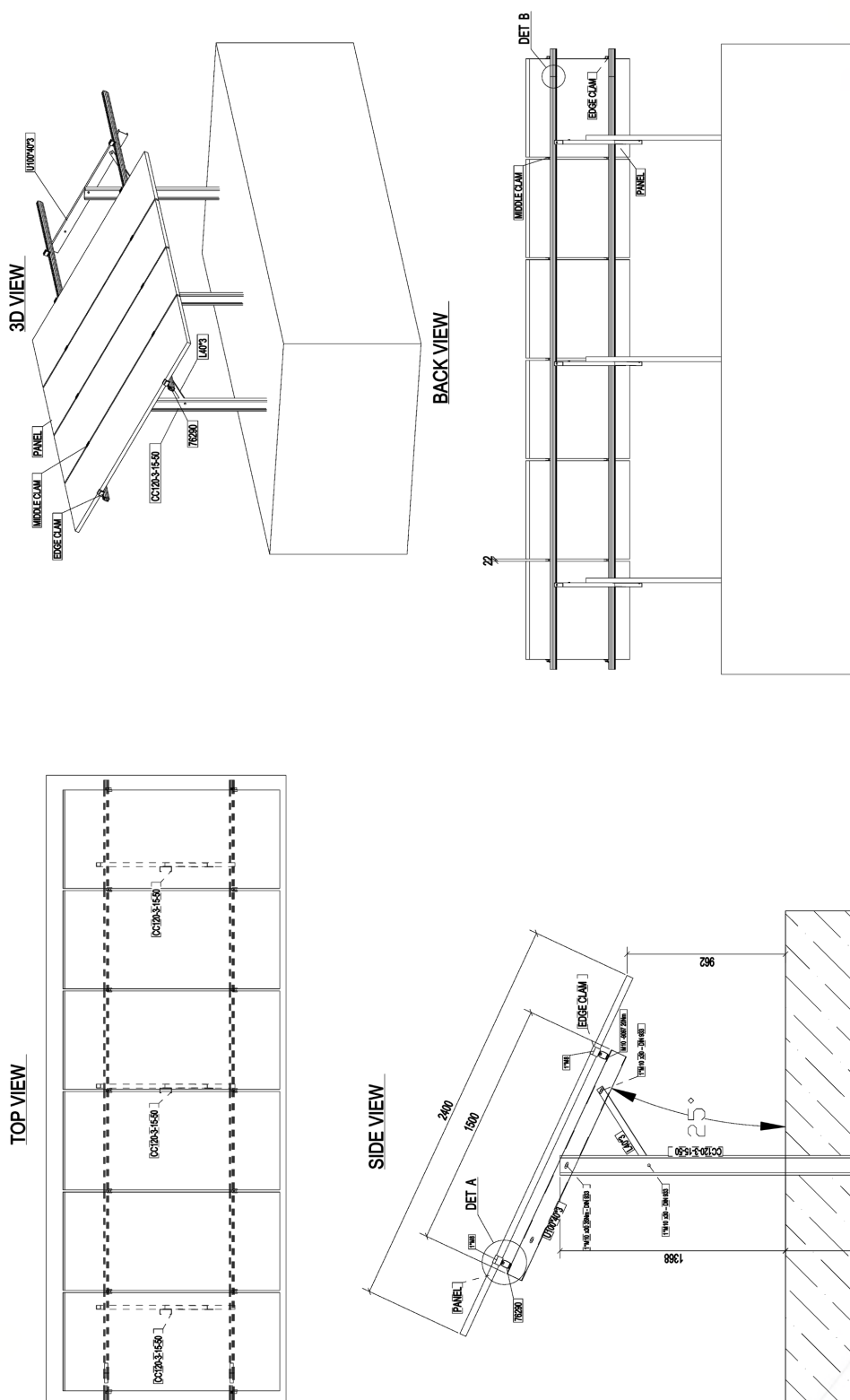
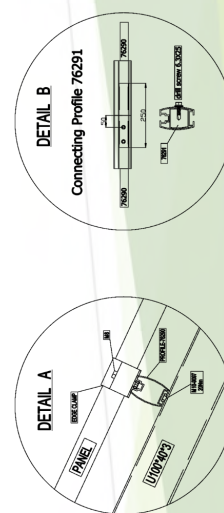
Following you will find examples of a general table layout and mounting system section layout.

Alpha Solar FFH 1P 1C 1000 - Mounting System Layout Example





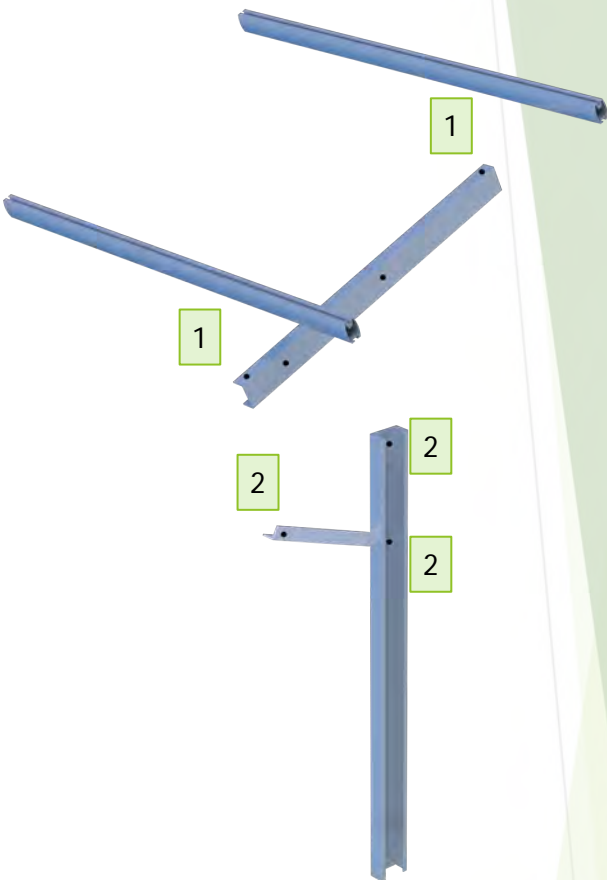
## FFH 1P 1C 1000 - Planning and Design - Layout Example

[illegible]

Alpha Solar FFH 1P 1C 1000 - Typical Model Example

1. 9097 M10x25 Hammer Head Bolt  
DIN934 M10 HEX NUT  
DIN125 M10.5 WASHER

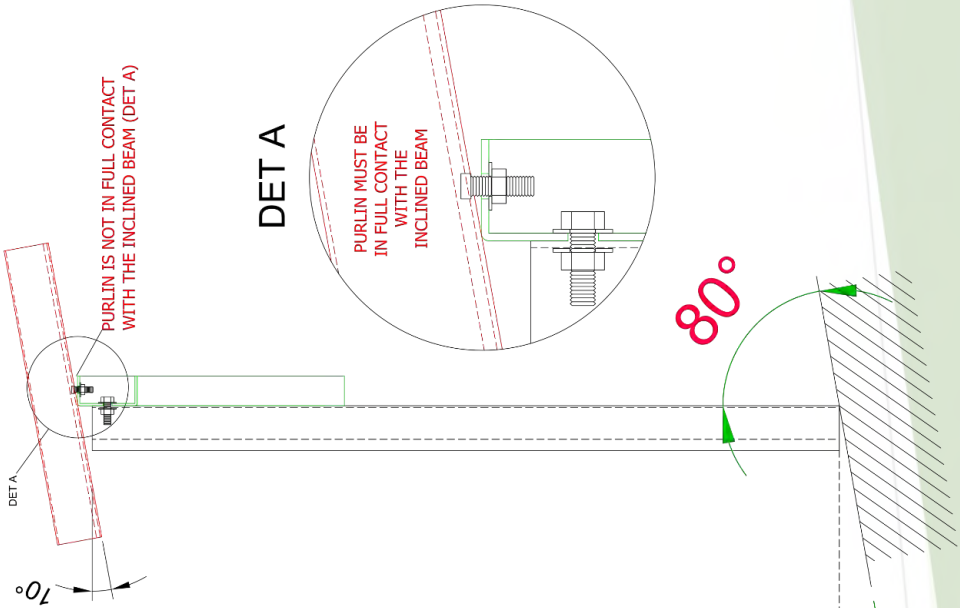
2. DIN933 M10x30 HEX BOL  
DIN934 M10 HEX NUT  
DIN9021 M10.5 WASHER



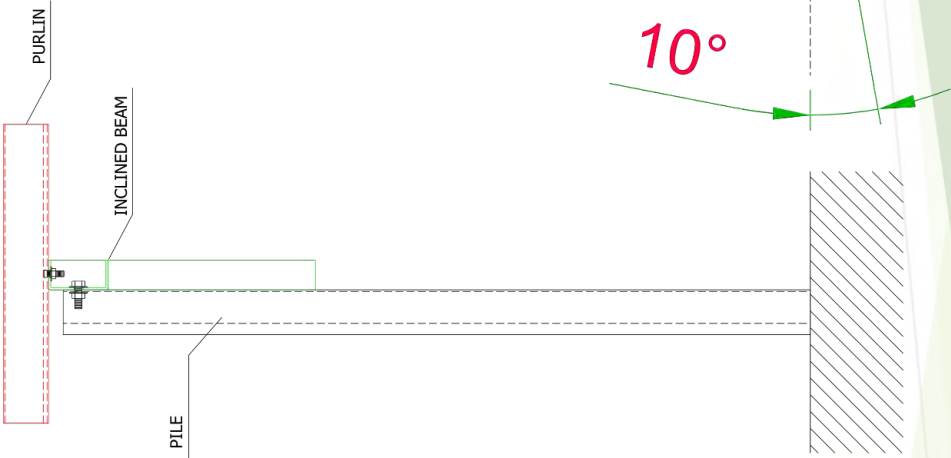
Ramming Post Tolerances	
Heigth	+/- 20mm
North / South	+/- 2 °
East / West	+/- 2 °



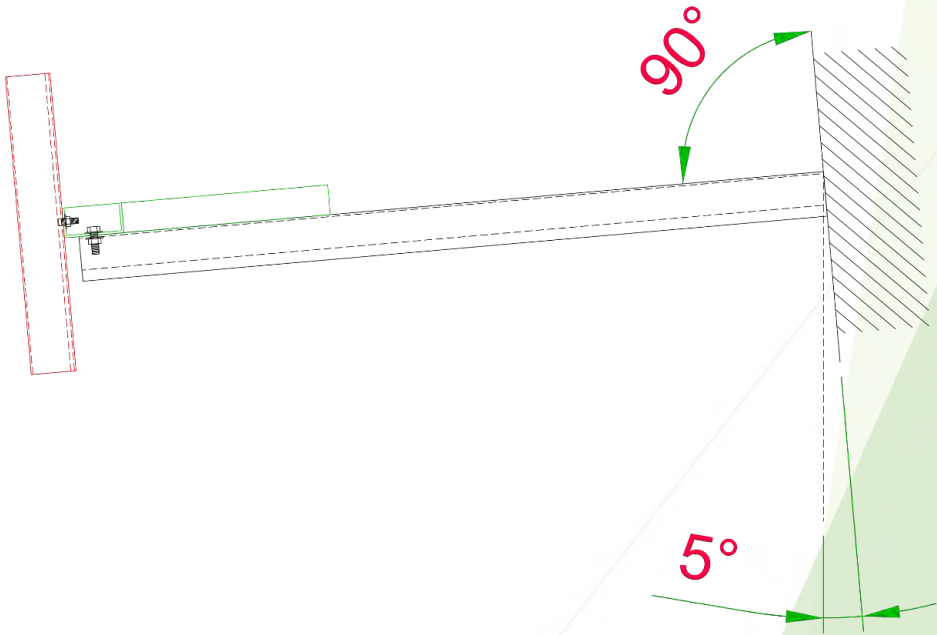
INCORRECT INSTALLATION



CORRECT INSTALLATION

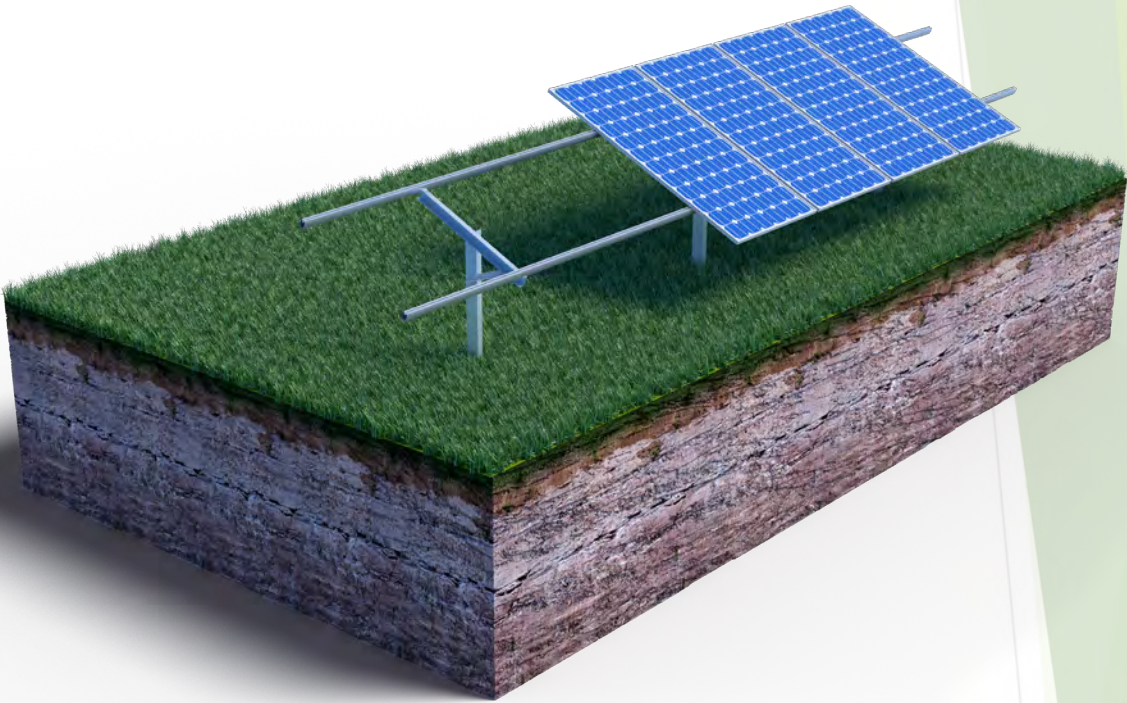


CORRECT INSTALLATION



## Tools Needed for Assembly

Part	Technical Description	Image
<b>1</b>	<b>Allen Wrench 6mm</b>	
<b>2</b>	<b>Torque Wrench</b>	
<b>3</b>	<b>Wrench 13mm and 17mm</b>	



**FFH 1P 1C Preventative Maintenance**

It is important for the mounting system to be checked every 12 months and to use a torque wrench to check the mounting cap bolts and other screws for proper tightened torque.

**\*\*Stainless Steel Fasteners - Pre-load and Tightening Torques**

Thread	Coeff Friction	Preload (Kn) Property class			Tightening Torque (Nm) Property class			Min Breaking Torque		
		A1-50	A2-70	A4-80	A1-50	A2-70	A4-80	A1-50	A1-70	A4-80
M10.0	0.1	9.32	20	26.6	13.7	30	39.4	46	65	74
	0.2	7.58	16.2	16.2	20.3	44	58			
	0.3	6.14	13.1	13.1	24	51	69			

Alpha Solar FFH 1P 1C 1000



1<sup>st</sup> Industrial Area  
OT 1819, Volos TK38500  
Greece

T/F: +30 24210 85233  
@: info@emmanouil.sa.com